

Lenovo
smart lock

X5
max



USER MANUAL

1 : ADMIN SETTINGS

- a. If this product fails to verify the key 5 times during use, the system will lock it for 90 seconds, and enter the correct key again after 90 seconds to use it normally.
- b. Please pay attention to the battery level reminder before going out, and replace the battery in time when the power is insufficient.
- c. The spare emergency key must be placed outdoors, and do not leave all of it at home (can be placed in a private car, parents' or children's home).

1.1 : ADD ADMINISTRATOR PASSWORD

- a. Press [*] [#] key, voice prompt "factory status, please add 6-12 digit administrator password press [#] key to confirm", the user enters the password, press [#] key to confirm.
- b. Enter the password again when prompted, press the [#] key to confirm, and then enter the same set of passwords.

1.2 : ENTER THE MAIN MENU

Press the [*] [#] key, please use the administrator password for verification. After entering the main menu, the user can press the corresponding number key to select the operation according to the menu number.



2 : USER SETTING

1. Password Management
2. Fingerprint Management
3. Card Management
4. Face Management
5. System Setting

- 1
- 2 Follow the prompts to select the ones you want to add Password, Fingerprint, Card, or Face
- 3
- 4

Press the [*] [#] key, please use the administrator password for verification. After entering the main menu, the user can press the corresponding number key to select the operation according to the menu number.

2.1 : ADD PASSWORD

The user enters the password, press the [#] key to confirm, enter the password again when prompted, the user enters the same password, and press the [#] key to confirm. It also supports the dummy password function. The user can add random numbers before and after the correct password to achieve password input and verify unlocking.

⚠ CAUTION

For verification, it can include up to 20 digits dummy password, only one set of password can be included which can not be repeated

2.2 : ADD FINGERPRINT

The user places his finger in the fingerprint recognition area, and when prompted, he enters the fingerprint again, and the user registers the fingerprint with the same finger. The voice prompts "Operation successful".

⚠ CAUTION

- To enter a fingerprint, the user needs to record the fingerprint 5 times continuously.
- When collecting fingerprints, try to collect as many times as possible from different locations on the same finger, so that the subsequent verification of fingerprints is easier to be recognized.



2.3 : ADD RFID CARD

The user places the card close to the card sensing area, and the voice prompts "Operation successful".

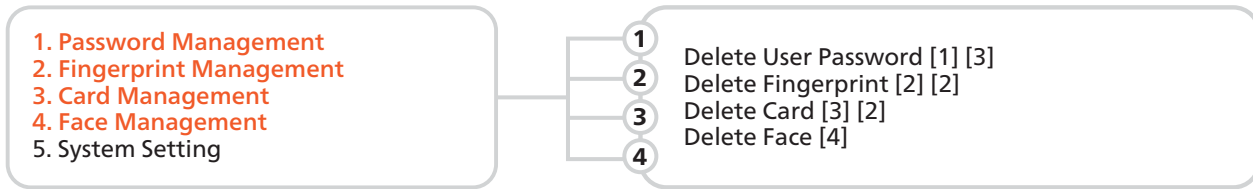
2.4 : ADD FACE

Follow the voice prompts to enter the front face, right part of face, left part of face, bottom part of face and top part of face in the face recognition area, and wait until you hear the voice prompt "Operation successful", which means the user's face is added successfully.

2.5 : DELETE USER

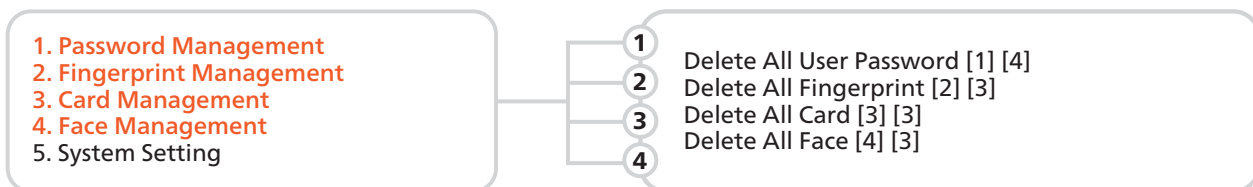
Press the [*] [#] key, please use the administrator password for verification. After entering the main menu, the user can press the corresponding number key to select the operation according to the menu number.

2.5.1 : SINGLE DELETION



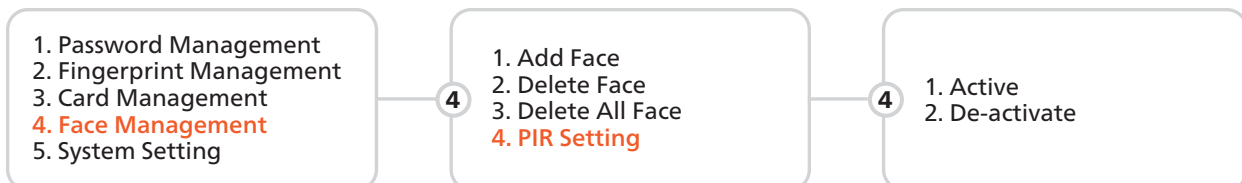
Voice prompt verification deletes the Password, Fingerprint, Card or Face that has been entered, and it is necessary to verify that the user has entered the Password, Fingerprint, Card or Face, and the system will delete a single Password, Fingerprint, Card or Face after passing the verification.

2.5.2 : DELETE ALL



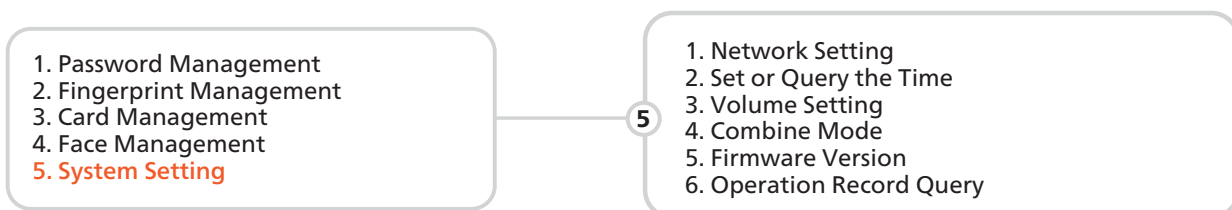
Select Delete All Passwords, All Fingerprints, All Cards, and All Faces, and you need to enter the administrator password again to confirm the deletion.

2.6 : PIR SETTING



The user can choose to turn PIR setting on or off. After turning off the body sensor, the door lock needs to be awakened for face unlocking.

3 : SYSTEM SETTING



Press the [*] [#] key, please use the administrator password for verification. After entering the main menu, the user can press the corresponding number key to select the operation according to the menu number.

According to the menu, press the corresponding number keys to select the desired setting option.

⚠ CAUTION

The current administrator can not be deleted, the system guarantees at least one administrator can not be deleted to avoid the lock in the default state, the user can open the lock at will, and the user will not be able to enter the management menu.

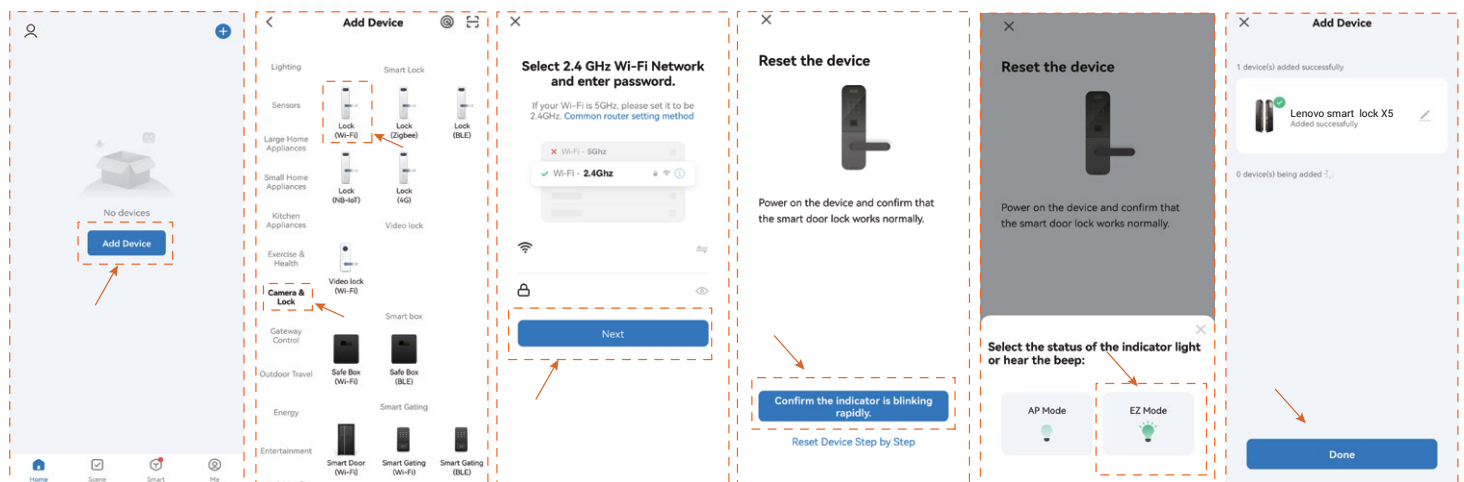
4 : NETWORK SETTING

Users can download and install the "Tuya Smart" APP on Google Play or App Store, and follow the APP prompts to register for an account.

Note: As the APP version will be optimized on a regular basis, it shall be subject to the actual APP interface.

4.1 : MANUALLY ADD WI-FI DEVICES

Select a device type. On the page that appears, enter the password for connecting to the 2.4 GHz Wi-Fi network. The location permission must be granted to automatically find Wi-Fi networks.



- Select "Add Device" > "Camera & Lock" > Lock (Wi-Fi).
- Enter the correct WiFi name and WiFi password.
- Follow the door lock menu to enter the network settings, click "confirm the indicator is blinking rapidly".
- Select EZ Mode, waiting for device addition. After successful addition, click "Done" to go to the details page.

Note: If the above steps fail, you can choose to switch the network configuration mode in the App and follow the instructions on the App page.

After completing the network configuration, you can modify the name of the smart lock and select the room where it is located. Click "Finish" and then you may use the App function of the smart lock.

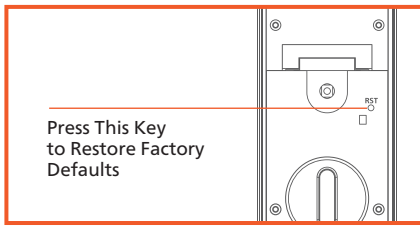
4.2 : THE MAIN FUNCTIONS OF THE APP

- View and manage users and their associated passwords, keys, and cards.
- Create and manage temporary passwords (unlocked for a specified period of time)
- Normal door opening message remote notification.
- After the coercion password/coercion fingerprint is unlocked, it can be remotely alerted (you need to set the coerced unlocking method in user management).
- Doorbell alarm, you can check the date, time.
- Pressing the doorbell can trigger the mobile phone APP video docking, which can realize the mobile phone APP remote real-time and lock video intercom

Notes: The following problems may cause the smart lock binding failure, please check to avoid such problems.

- The router opens the anti-WiFi-squatter function, which may lead to the device cannot be connected normally, you can check whether the anti-WiFi-squatter function is opened, temporarily close it when the network is matched, and then restore the router settings after successful network configuration.
- Dual-band router users, please ensure that the cell phone and smart lock is connected to the 2.4G band WiFi.
- Due to the instability of the bridged network, it is recommended to connect non-bridged WiFi.
- The smart lock does not support WAP/ WPA2 enterprise WiFi for now, please use other WiFi.
- Android system phones need to open the GPS.

5 : RESTORE FACTORY



When prompted to restore factory settings, confirm that please press the [#] key, and press the [*] key to cancel.

⚠ CAUTION

After the factory Settings are restored, all user data will be cleared. Exercise caution when performing this operation.

6 : SCREEN KEYS FUNCTION

Three buttons: (1) Up/Off button (2) Power/OK key (3) Down/Back key

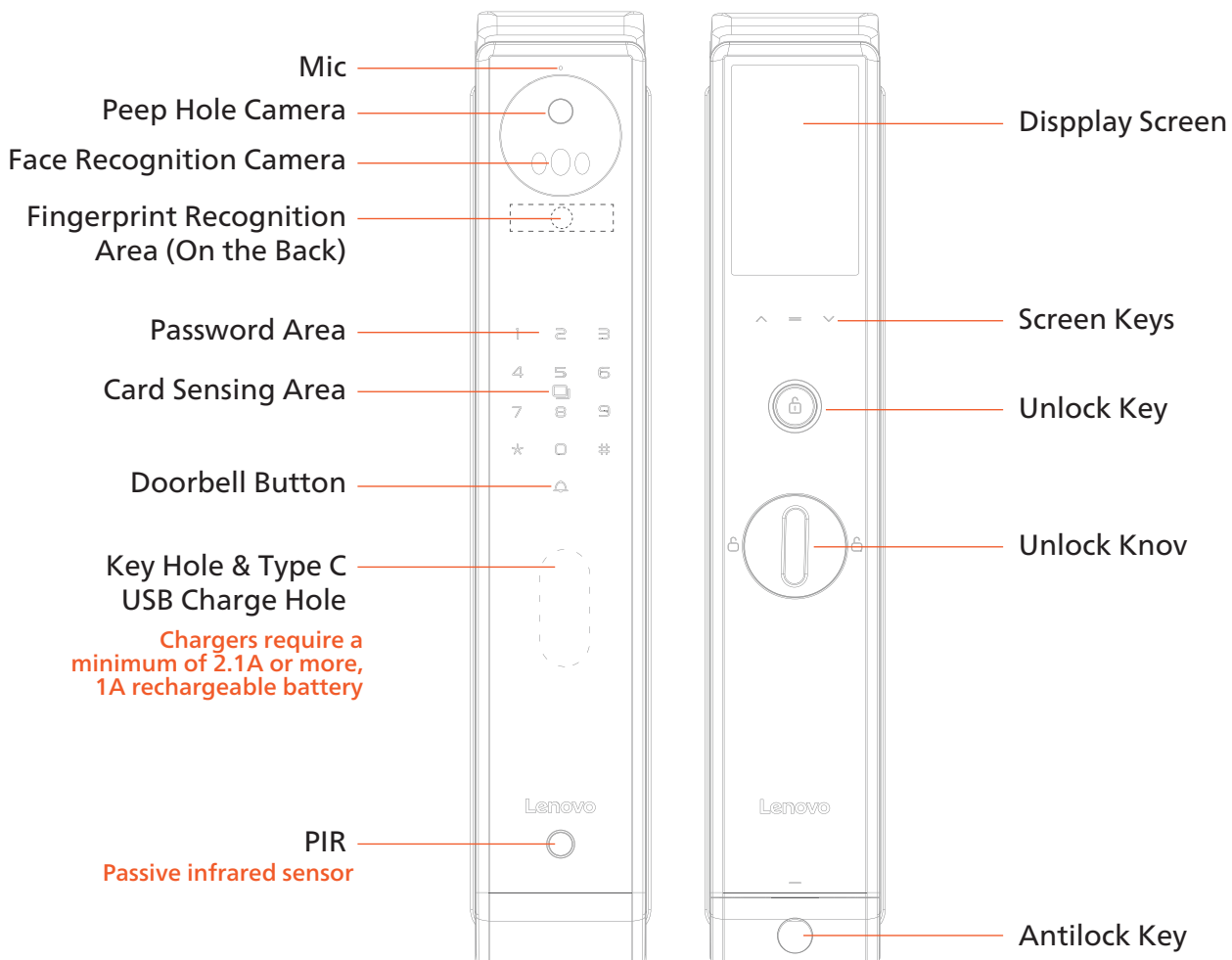
(1) Up/off screen button: short press on the recording interface to turn off the screen, and short press on the setting menu interface to select it;

(2) Power/OK key: short press on the video interface to take a photo or video, and short press on the menu interface to confirm. Long pressing on any interface is a shutdown

(3) Down/Back button: recording interface, short press to enter the setting menu interface Short press on the settings menu interface to select down, and long press on the settings menu interface to return

Insert an external memory card to save the visitor record content, and on the view visitor record interface, long press the up button to delete the file

7 : PRODUCT INTRODUCTION



The pictures in the User Manual is for reference only which shall be subject to the product in kind.



FACE RECOGNITION

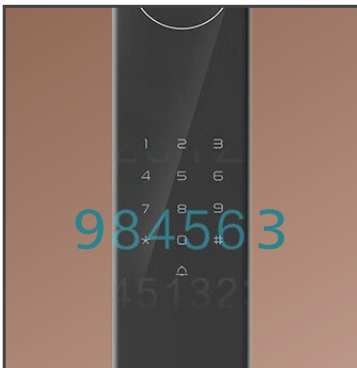
Make the recorded face close to the lock. When the lock end recognizes the face information, and face is verified successfully, it will give a voice prompt "locked".



FINGERPRINT UNLOCK

Press the fingerprint area to open the lock. After it is verified, the lock can be opened

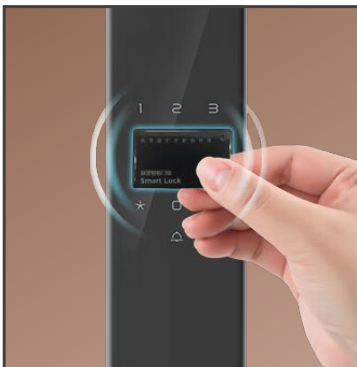
(please add the user's fingerprint in the admin mode for the first time)



PASSCODE UNLOCK

Wake up the panel to enter the password + [#] key. After it is verified, the lock can be opened.

(Please add the user password in the admin mode for the first time)



ENCRYPTED INDUCTION CARD

Place the induction card in the proximity area to unlock after successful verification.

(Please add the induction card in the admin mode for the first time)



C-LEVEL KEY

In case of forgetting the password or insufficient power supply, when the smart door lock cannot operate, you can use the mechanical spare key or external mobile power to open the lock.



www.lenovosmartlock.com