

**Lenovo**  
**smart lock**

**E3**  
**PRO**



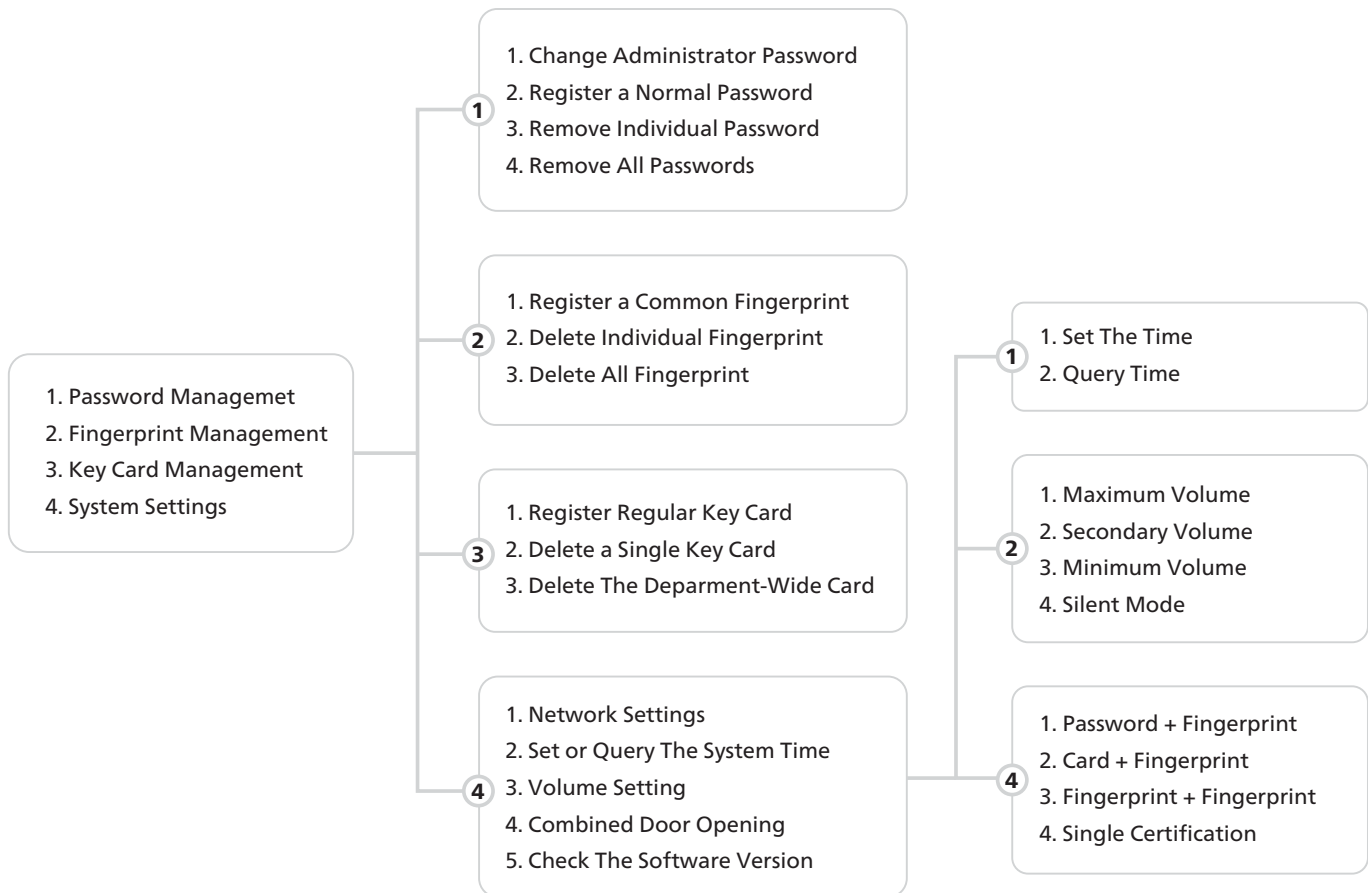
**USER MANUAL**

## 1 : ADMIN SETTINGS

- a. Press [\*] [#] key, voice prompt "factory status, please add 6-14 digits administrator password press [#] key to confirm", the user enters the password, press [#] key to confirm.
- b. Enter the password again when prompted, press the [#] key to confirm, and then enter the same set of passwords.
- c. Voice prompt "Registration successful", the system automatically jumps to the main menu, the user exits according to the voice navigation or performs other operations.

### 1.1 : ENTER THE MAIN MENU

Press the [\*] [#] key, please use the administrator password for verification. After entering the main menu, the user can press the corresponding number key to select the operation according to the menu number.



#### TIPS

1. If this product fails to verify the key 5 times during use, the system will lock it for 90 seconds, and enter the correct key again after 90 seconds to use it normally.
2. Please pay attention to the battery level reminder before going out, and replace the battery in time when the power is insufficient.
3. The spare emergency key must be placed outdoors, and do not leave all of it at home (can be placed in a private car, parents' or children's home).

## 2 : ADD USER

1. Password Management
2. Fingerprint Management
3. Key Card Management
4. System Settings

- 1 Follow the prompts to select the ones you want to add Password, fingerprint or key card
- 2
- 3

Press the [\*] [#] key, please use the administrator password for verification. After entering the main menu, the user can press the corresponding number key to select the operation according to the menu number.

### 2.1 : ADD PASSWORD

The user enters the password, press the [#] key to confirm, press the [#] key to confirm, and enter the password again when prompted, and the user enters the same password. Support the virtual password function, you can add numbers before and after the correct password at will to achieve password input and verification unlocking (up to 32 digits including virtual password bits during verification,

### 2.2 : ADD FINGERPRINT

The user places his finger on the fingerprint sensor, and when prompted, enters the fingerprint again, and the user places the same finger on the sensor. The voice prompt "Registration successful".

#### ⚠ CAUTION

- a. To enter a fingerprint, the user needs to record the fingerprint 5 times continuously.
- b. When collecting fingerprints, try to collect as many times as possible from different locations on the same finger, so that the subsequent verification of fingerprints is easier to be recognized.



### 2.1 : ADD KEY CARD

The user places the card close to the antenna receiving area and the voice prompt "Registration successful".

## 4 : DELETE USER

Press the [\*] [#] key, please use the administrator password for verification. After entering the main menu, the user can press the corresponding number key to select the operation according to the menu number.

### 4.1 : DELETE SINGLE USER

1. Password Management
2. Fingerprint Management
3. Key Card Management
4. System Settings

- 1 Delete a single password press [1] [4]
- 2 Delete a single fingerprint, press [2] [3]
- 3 Delete a single key card and press [3] [2]

Voice prompt verification deletes the password, fingerprint or door card that has been entered, and it is necessary to verify that the user has entered the password, fingerprint or door card, and the system will delete the single password, fingerprint or door card after passing the verification.

### 4.2 : DELETE ALL USER

1. Password Management
2. Fingerprint Management
3. Key Card Management
4. System Settings

- 1 Delete all passwords press [1] [5]
- 2 Delete all fingerprints, press [2] [4]
- 3 Delete a department-wide card, press [3] [3]

- a. The voice prompt "Delete All", the user will delete all corresponding passwords, fingerprints, and key cards.
- b. Voice prompt "Operation successful".

#### ⚠ CAUTION

The current administrator cannot be deleted, the system guarantees that at least one administrative user cannot be deleted, to avoid the lock being in the initial state, the lock can be opened at will, and the user will not be able to enter the management menu.

## 5 : SYSTEM SETTING

Press the [\*] [#] key, please use the administrator password for verification. After entering the main menu, the user can press the corresponding number key to select the operation according to the menu number.

1. Password Management
2. Fingerprint Management
3. Key Card Management
4. System Settings

- 4 1. Network Settings
2. Set or Query The System Time
3. Volume Setting
4. Combined Door Opening
5. Check The Software Version

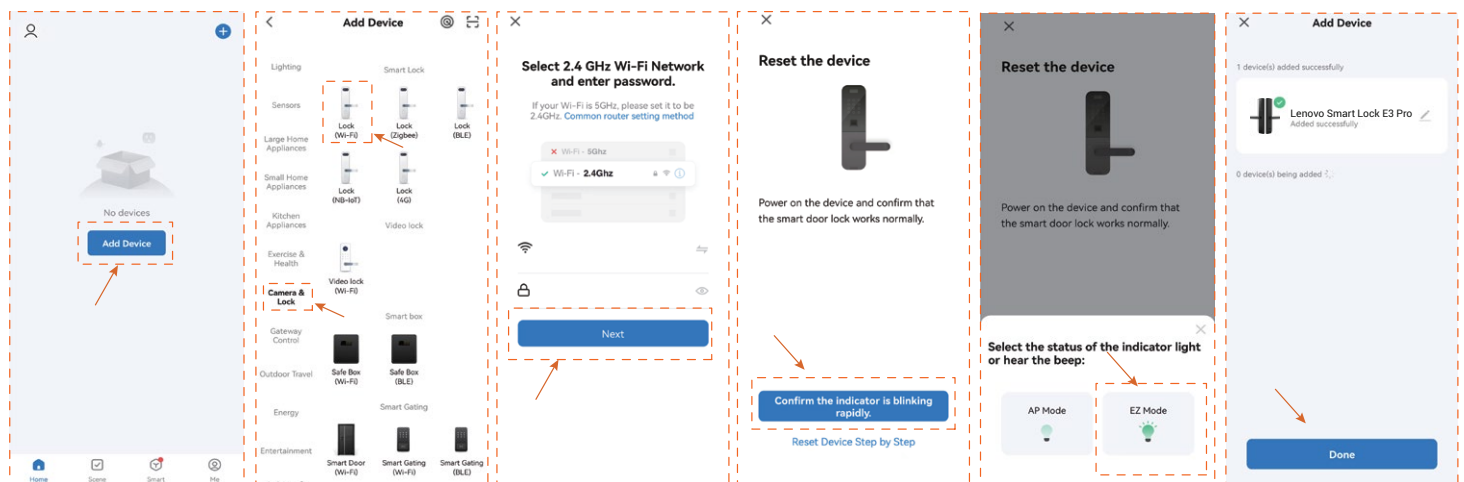
## 6 : NETWORK SETTING

Users can download and install the "Tuya Smart" APP on Google Play or App Store, and follow the APP prompts to register for an account.

**Note:** As the APP version will be optimized on a regular basis, it shall be subject to the actual APP interface.

### 6.1 : MANUALLY ADD WI-FI DEVICES

Select a device type. On the page that appears, enter the password for connecting to the 2.4 GHz Wi-Fi network. The location permission must be granted to automatically find Wi-Fi networks.



- Select "Add Device" > "Camera & Lock" > Lock (Wi-Fi).
- Enter the correct WiFi name and WiFi password.
- Follow the door lock menu to enter the network settings, click "confirm the indicator is blinking rapidly"
- Select EZ Mode, Waiting for device addition. After successful addition, Click "Done" to go to the details page

**Note:** If the above steps fail, you can choose to switch the network configuration mode in the App and follow the instructions on the App page.

After completing the network configuration, you can modify the name of the smart lock and select the room where it is located. Click "Finish" and then you may use the App function of the smart lock.

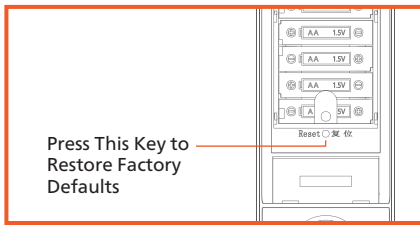
### 6.2 : THE MAIN FUNCTIONS OF THE APP

- View and manage users and their associated passwords, keys, and cards.
- Create and manage temporary passwords (unlocked for a specified period of time)
- Normal door opening message remote notification.
- After the coercion password/coercion fingerprint is unlocked, it can be remotely alerted (you need to set the coerced unlocking method in user management).
- Doorbell alarm, you can check the date, time.
- Pressing the doorbell can trigger the mobile phone APP video docking, which can realize the mobile phone APP remote real-time and lock video intercom

**Notes:** The following problems may cause the smart lock binding failure, please check to avoid such problems.

- The router opens the anti-WiFi-squatter function, which may lead to the device cannot be connected normally, you can check whether the anti-WiFi-squatter function is opened, temporarily close it when the network is matched, and then restore the router settings after successful network configuration.
- Dual-band router users, please ensure that the cell phone and smart lock is connected to the 2.4G band WiFi.
- Due to the instability of the bridged network, it is recommended to connect non-bridged WiFi.
- The smart lock does not support WAP/ WPA2 enterprise WiFi for now, please use other WiFi.
- Android system phones need to open the GPS.

## 7 : RESTORE FACTORY

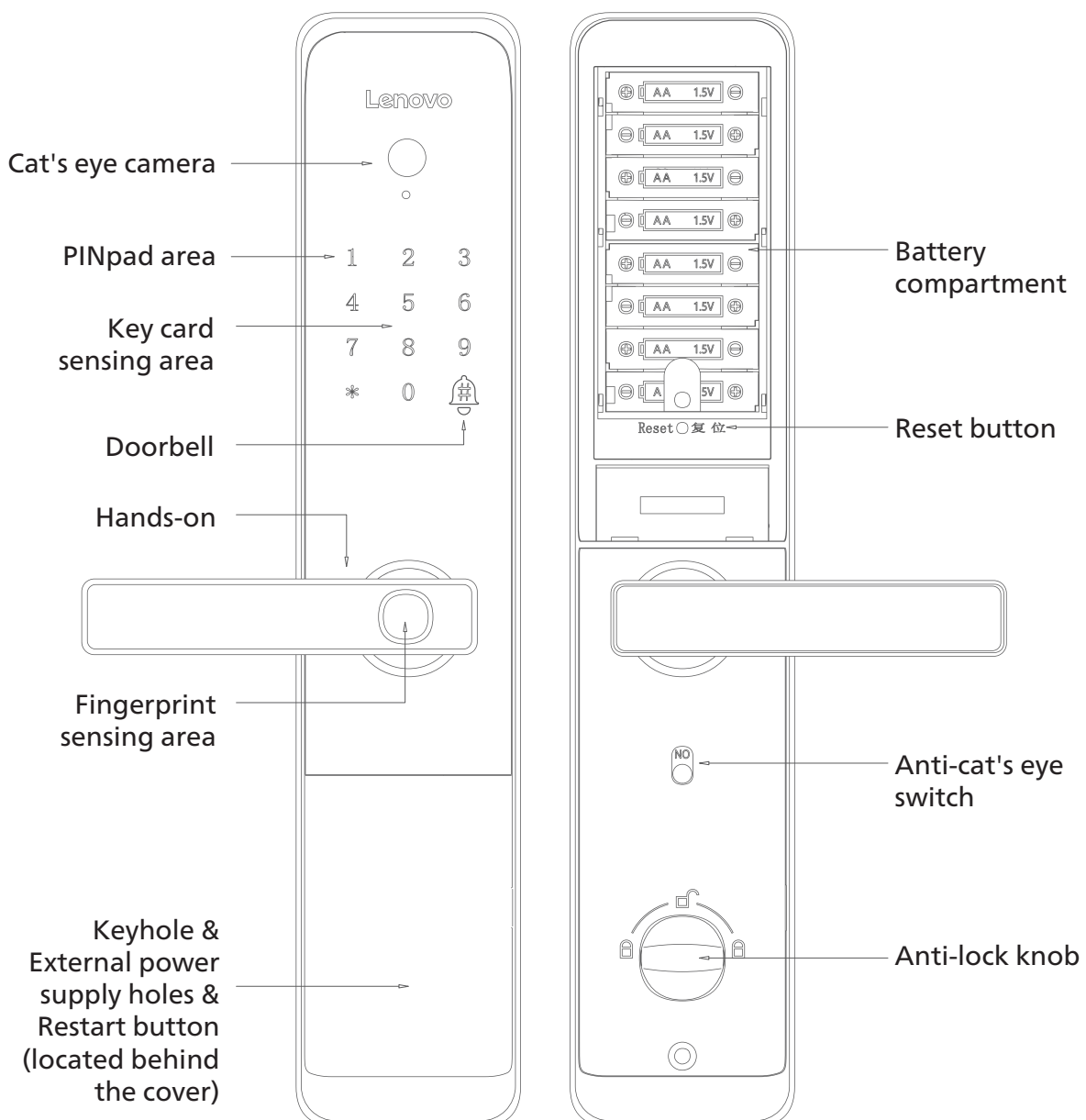


When prompted to restore factory settings, confirm that please press the [#] key, and press the [\*] key to cancel.

### ⚠ CAUTION

After the factory Settings are restored, all user data will be cleared. Exercise caution when performing this operation.

## 8 : PRODUCT INTRODUCTION



## 9 : OPENING METHODS

### 9.1 : NORMALLY OPENING MODE

- a. Press [\*][#] to enter the menu and press [4] to enter the system settings.
- b. Press [4] to set the unlocking method, press [4] for Single Certification.

### 9.1 : COMBINE OPEN MODE

In combine-open mode, two-factor authentication is required to unlock successfully, for example: password + fingerprint, Card + Fingerprint, Fingerprint + Fingerprint

- a. Press [\*][#] to enter the menu and press [4] to enter the system settings.
- b. Press [4] to set the unlocking method, press [1] or [2] or [3]



### 9.2 : FINGERPRINT UNLOCK

- a. Touch your finger on the keypad to wake up the door lock.
- b. Press your finger (added) on the fingerprint collector in the correct way.
- c. Voice prompt "Unlocked" turn down the handle to open the door.



### 9.3 : PASSCODE UNLOCK

- a. Touch your finger on the keypad to wake up the door lock.
- b. Enter the entered password, press [#] to confirm, and the voice prompt "has been unlocked".
- c. Turn the handle down to unlock the lock.

**Note:** Enter the password to pay attention to the surrounding environment, pay attention to the blocking, and prevent being peeped by the people next to you



### 9.4 : ENCRYPTED INDUCTION CARD

Close or paste the added proximity card close to or on the keyboard area, and the voice prompt "Unlocked" is displayed after the sensor card is successfully verified.

## 10 : EMERGENCY OPENING METHODS

In case of emergency such as forgetting the password, running out of battery, or the system not working, you can use a mechanical key to unlock the lock or use the emergency charging port to unlock.



### 10.1 : MECHANICAL KEY

Insert the mechanical key into the mechanical keyhole on the lock, and turn the key to unlock the lock.

### 10.2 : USB EXTERNAL PORT

When the battery is exhausted and there is no key, you can connect the external power supply and open the door according to the normal operation steps.

## 11 : LOCK METHODS



### 11.1 : HANDLE

- a. External locking outdoor handle rotate up to lock
- b. Internal locking chamber handle upward rotation lock



### 11.2 : ANTI-LOCK KNOB

Turn the knob to carry out anti-locking, at this time the door cannot be opened normally from the outside, and the mechanical anti-lock needs to be released indoors before the door can be opened normally.



### 11.3 : CAT'S EYE SWITCH

- a. The anti-cat's eye switch under the indoor panel handle is turned up, and the anti-cat's eye function is turned off.
- b. The anti-cat's eye switch is set down in place, the anti-cat's eye function is turned on, and the handle is separated, and the handle in the door cannot be opened at this time.





*[www.lenovosmartlock.com](http://www.lenovosmartlock.com)*