

**Lenovo**  
**smart lock** **E2**



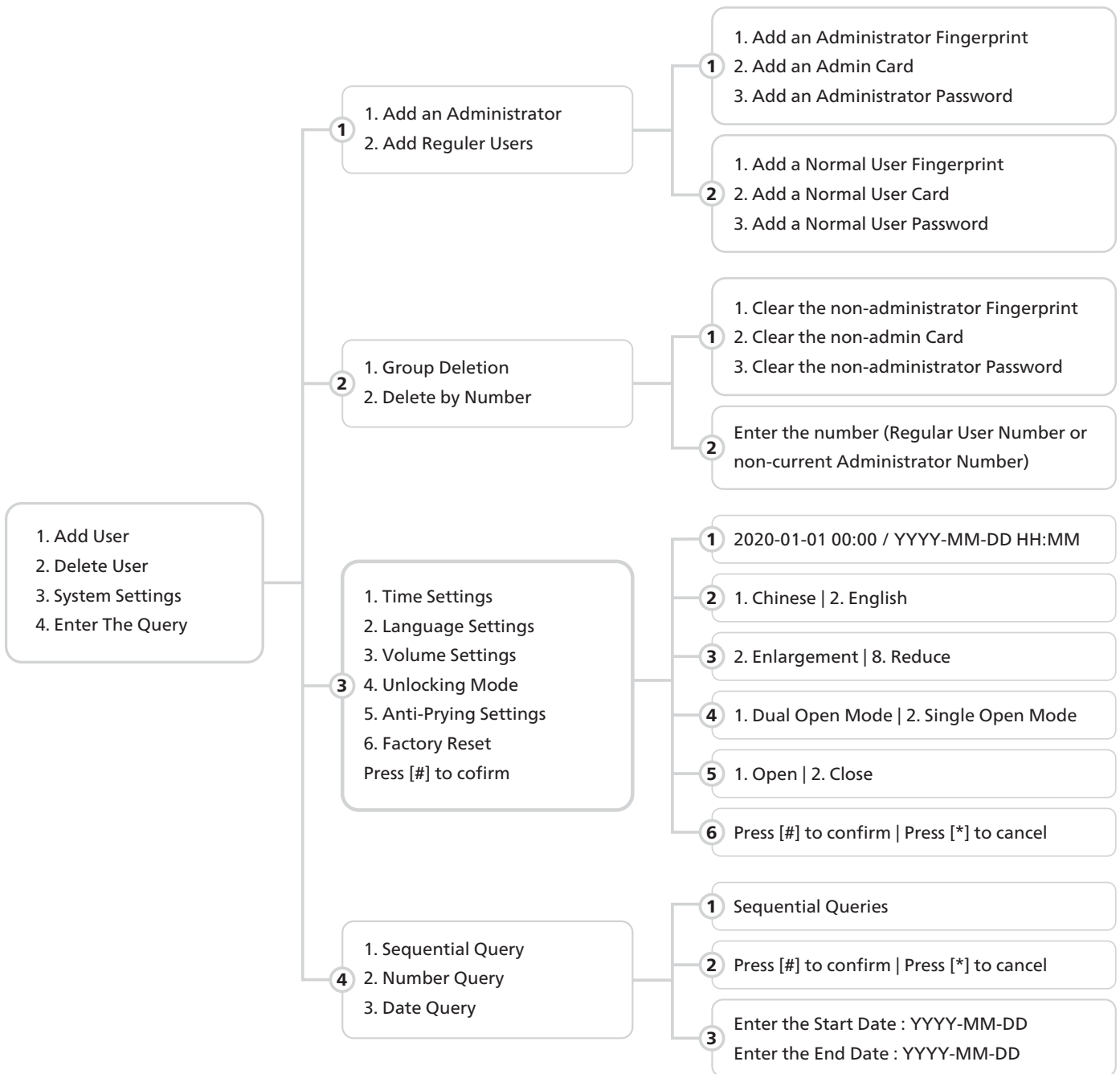
**USER MANUAL**

# 1 : ADMIN SETTINGS

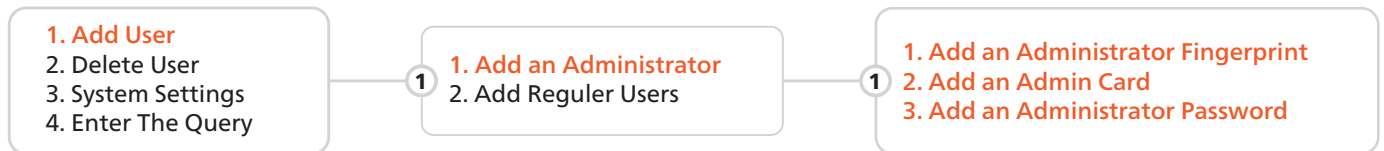
- a. For the first time: Wake up the keyboard and press [\*] [#] in turn, the voice prompt "Please verify administrator", press "123456", press [#] to confirm. The voice prompts "Verified passed" to start adding the administrator.
- b. After setting the administrator: press [\*] [#] after waking up the keyboard, the voice prompt "Please verify the administrator", press the administrator fingerprint, password or swipe card, and the voice prompt "Verify passed" to start the setting.

## 1.1 : ENTER THE MAIN MENU

Wake up the keyboard and press [\*] [#] in turn, the voice prompt "Please verify the administrator", press the administrator fingerprint, password or swipe card, and the voice prompt "Authentication passed". To enter the main menu, you must enter administrator information verification. Once in the main menu, press the corresponding number keys to select the action.

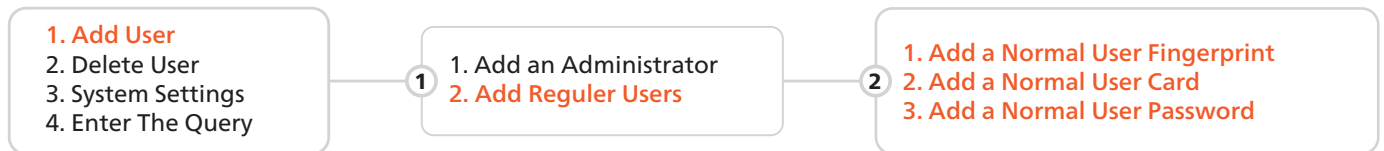


## 2 : ADD ADMINISTRATOR



Press [\*] and then [#] to enter the menu, and press [1] [1] to enter the add administrator information.

## 3 : ADD REGULAR USER



Press [\*] and then [#] to enter the menu, and press [1] [2] to enter the add administrator information.

### 3.1 : ADD FINGERPRINT

Press the finger you want to add in the fingerprint recognition area to add a fingerprint. When you hear the prompt "Please remove and put it again", press the same finger again and repeat this step 4 times.

#### ⚠ CAUTION

- To enter a fingerprint, the user needs to record the fingerprint 5 times continuously.
- When collecting fingerprints, try to collect as many times as possible from different locations on the same finger, so that the subsequent verification of fingerprints is easier to be recognized.



### 3.2 : ADD CARD

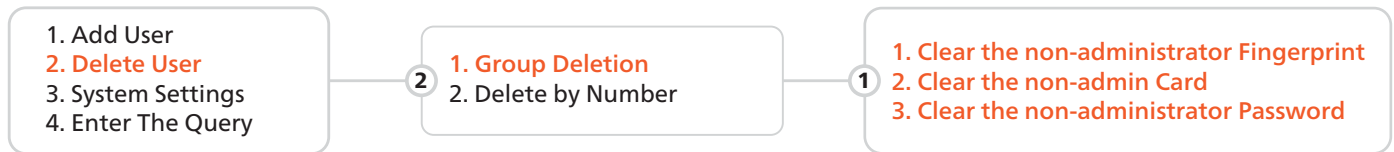
Voice announces "Please swipe the card", swipe the card in the door card recognition area, and the voice prompt "Add Successful".

### 3.3 : ADD PASSWORD

Enter the 4-10 digit password you want to add on the keyboard and press [#] to end, hear the prompt "Please enter again", enter the same password again, and press [#] to end.

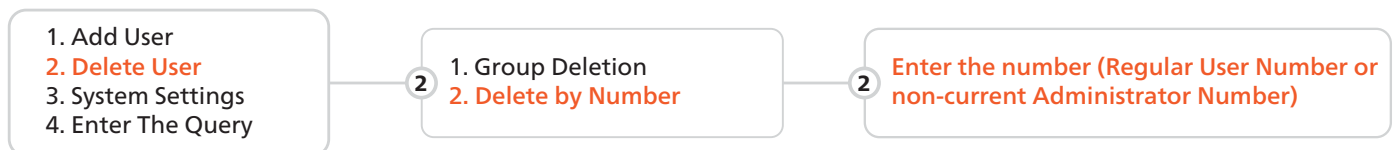
## 4 : DELETE USER

### 4.1 : GROUP DELETION



Press [\*] and then [#] to enter the menu, and press [2] [1] to Group Deletion. Press [1] or [2] or [3] then Press [#] to confirm

### 4.2 : DELETE BY NUMBER



Press [\*] and then [#] to enter the menu, and press [2] [2] to Delete by Number. Enter the number (Regular User Number or non-current Administrator Number). Press [#] to confirm

#### ⚠ CAUTION

The current administrator cannot be deleted, the system guarantees that at least one administrative user cannot be deleted, to avoid the lock being in the initial state, the lock can be opened at will, and the user will not be able to enter the management menu.

## 5 : SYSTEM SETTING

Press [\*] and then [#] to enter the menu, and press [3] to enter the system settings.

- 1 Time Setting : Enter the time [YYYY-MM-DD HH:MM]. Eg: 2023-08-16 23:15. Press [#] to confirm.
- 2 Language Setting : Press [1] in Chinese; Press [2] in English. Press [#] to confirm.
- 3 Volume Setting : Enter the time [YYYY-MM-DD HH:MM]. Eg: 2023-08-16 23:15. Press [#] to confirm.
- 4 Unlocking Mode : Press [1] to open combination unlock; Press [2] to close the combination unlock. Press [#] to confirm.
- 5 Anti-prying Setting : Press [1] to open; Press [2] to close. Press [#] to confirm.
- 6 Factory Setting : Factory reset and press [#] to confirm; Press [\*] to cancel.

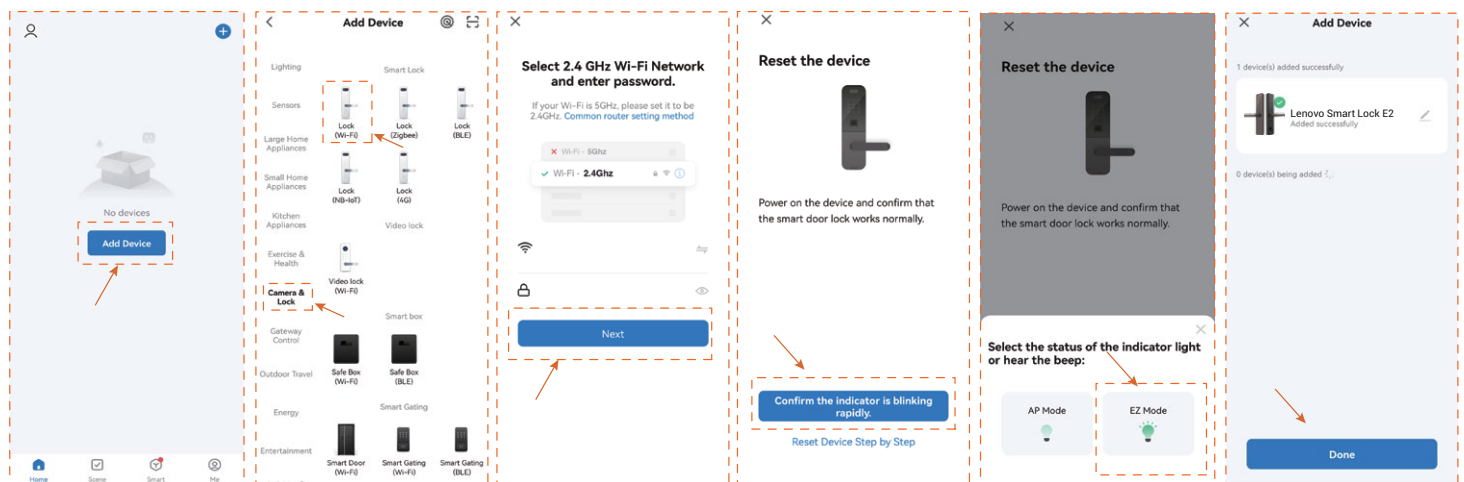
## 6 : NETWORK SETTING

Users can download and install the "Tuya Smart" APP on Google Play or App Store, and follow the APP prompts to register for an account.

**Note:** As the APP version will be optimized on a regular basis, it shall be subject to the actual APP interface.

### 6.1 : MANUALLY ADD WI-FI DEVICES

Select a device type. On the page that appears, enter the password for connecting to the 2.4 GHz Wi-Fi network. The location permission must be granted to automatically find Wi-Fi networks.



- Select "Add Device" > "Camera & Lock" > Lock (Wi-Fi).
- Enter the correct WiFi name and WiFi password.
- Follow the door lock menu to enter the network settings, click "confirm the indicator is blinking rapidly"
- Select EZ Mode, Waiting for device addition. After successful addition, Click "Done" to go to the details page

**Note:** If the above steps fail, you can choose to switch the network configuration mode in the App and follow the instructions on the App page.

After completing the network configuration, you can modify the name of the smart lock and select the room where it is located. Click "Finish" and then you may use the App function of the smart lock.

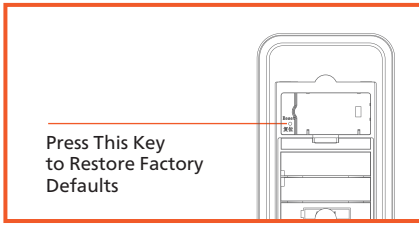
### 6.2 : THE MAIN FUNCTIONS OF THE APP

- View and manage users and their associated passwords, keys, and cards.
- Create and manage temporary passwords (unlocked for a specified period of time)
- Normal door opening message remote notification.
- After the coercion password/coercion fingerprint is unlocked, it can be remotely alerted (you need to set the coerced unlocking method in user management).
- Doorbell alarm, you can check the date, time.
- Pressing the doorbell can trigger the mobile phone APP video docking, which can realize the mobile phone APP remote real-time and lock video intercom

**Notes:** The following problems may cause the smart lock binding failure, please check to avoid such problems.

- The router opens the anti-WiFi-squatter function, which may lead to the device cannot be connected normally, you can check whether the anti-WiFi-squatter function is opened, temporarily close it when the network is matched, and then restore the router settings after successful network configuration.
- Dual-band router users, please ensure that the cell phone and smart lock is connected to the 2.4G band WiFi.
- Due to the instability of the bridged network, it is recommended to connect non-bridged WiFi.
- The smart lock does not support WAP/ WPA2 enterprise WiFi for now, please use other WiFi.
- Android system phones need to open the GPS.

## 7 : RESTORE FACTORY

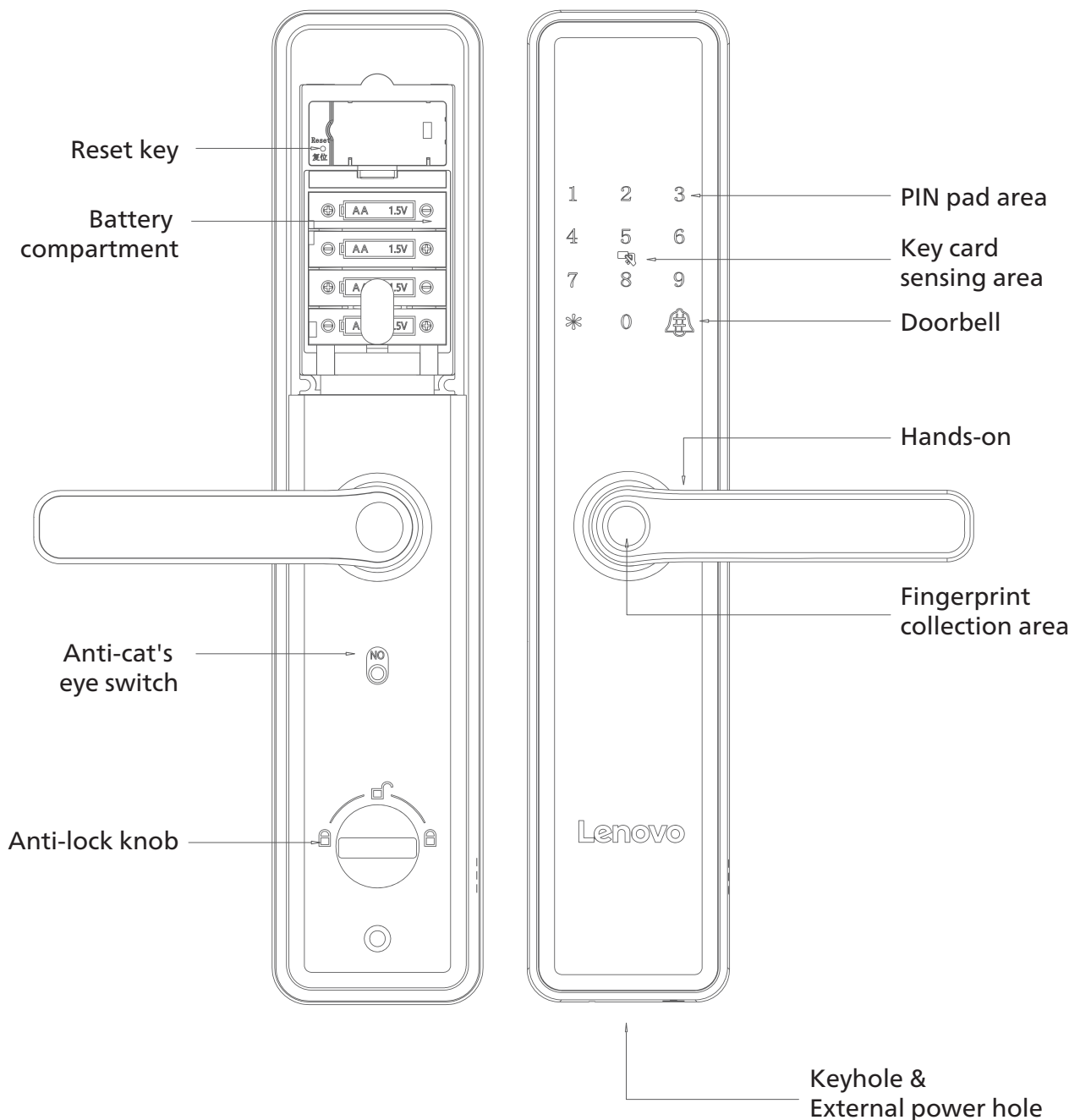


When prompted to restore factory settings, confirm that please press the [#] key, and press the [\*] key to cancel.

### ⚠ CAUTION

After the factory Settings are restored, all user data will be cleared. Exercise caution when performing this operation.

## 8 : PRODUCT INTRODUCTION



The pictures in the User Manual is for reference only which shall be subject to the product in kind.

## 9 : OPENING METHODS

### 9.1 : NORMALLY OPENING MODE

- a. After unlocking, the [0] key lights up and long presses [0] and the system automatically enters normally open mode.
- b. After entering the correct fingerprint, password, and key card, the normally open mode is turned off

### 9.1 : DUAL OPEN MODE

In dual-open mode, two-factor authentication is required to unlock successfully, for example: password + fingerprint, password + key card, fingerprint + key card.

- a. Press [\*] to enter the menu and press [3] to enter the system settings.
- b. Press [4] to set the unlocking method, press [1] double opening mode; Press [2] single open mode and press [#] to confirm.



### 9.2 : FINGERPRINT UNLOCK

- a. Touch your finger on the keypad to wake up the door lock.
- b. Press your finger (added) on the fingerprint collector in the correct way.
- c. Voice prompt "Unlocked" turn down the handle to open the door.



### 9.3 : PASSCODE UNLOCK

- a. Touch your finger on the keypad to wake up the door lock.
- b. Enter the entered password, press [#] to confirm, and the voice prompt "has been unlocked".
- c. Turn the handle down to unlock the lock.

**Note:** Enter the password to pay attention to the surrounding environment, pay attention to the blocking, and prevent being peeped by the people next to you



### 9.4 : ENCRYPTED INDUCTION CARD

Close or paste the added proximity card close to or on the keyboard area, and the voice prompt "Unlocked" is displayed after the sensor card is successfully verified.

## 10 : EMERGENCY OPENING METHODS

In case of emergency such as forgetting the password, running out of battery, or the system not working, you can use a mechanical key to unlock the lock or use the emergency charging port to unlock.



### 10.1 : MECHANICAL KEY

Insert the mechanical key into the mechanical keyhole on the lock, and turn the key to unlock the lock.

### 10.2 : USB EXTERNAL PORT

When the battery is exhausted and there is no key, you can connect the external power supply and open the door according to the normal operation steps.

## 11 : LOCK METHODS



### 11.1 : HANDLE

- a. External locking outdoor handle rotate up to lock
- b. Internal locking chamber handle upward rotation lock



### 11.2 : ANTI-LOCK KNOB

Turn the knob to carry out anti-locking, at this time the door cannot be opened normally from the outside, and the mechanical anti-lock needs to be released indoors before the door can be opened normally.



### 11.3 : CAT'S EYE SWITCH

- a. The anti-cat's eye switch under the indoor panel handle is turned up, and the anti-cat's eye function is turned off.
- b. The anti-cat's eye switch is set down in place, the anti-cat's eye function is turned on, and the handle is separated, and the handle in the door cannot be opened at this time.





*[www.lenovosmartlock.com](http://www.lenovosmartlock.com)*